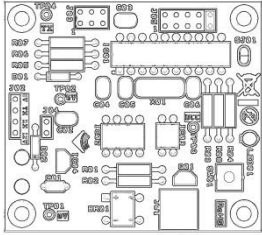
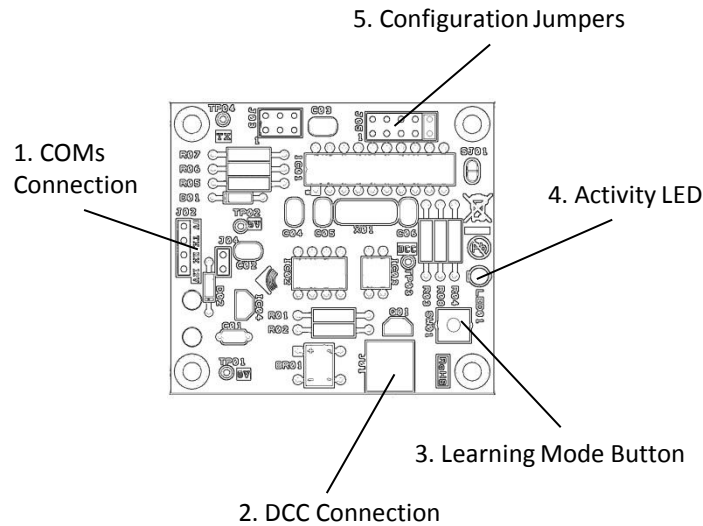


# DCC Module

## Quick Start Guide



## Know your DCC Module



2

## Connect your DCC Module

- Make sure your Nelevator is switched off.
- Connect two wires from your layout's DCC bus (or DCC tracks) to the screw terminals of the DCC connector (2) on your DCC module.
- Plug the cable from the DCC module (1) into the COMs port of your Nelevator (NOT the DCC port), ensuring the jack plug is pushed all the way in.
- Power-up your Nelevator; the activity LED (4) on the DCC module should flash 3 times to indicate that it has powered up successfully\*.
- Your DCC module is now ready to be used.

*\* Note: Early Nelevators were shipped with the COMs port configured to 5V, not 12V as required by the DCC module. Please see our website support pages if you need to reconfigure your Nelevator.*

3

## Operation

Your DCC module is configured to respond to standard DCC accessory commands in the NMRA **output addressing mode** from addresses 1 to 2,044 inclusive.

From the factory your DCC module is set to respond from **base address** = 1, with 20 consecutive addresses responding to the corresponding levels of the Nelevator.

For more detailed instructions on how to use and configure your DCC module, please download the full manual from:

[nelevation.com/dccmanual](http://nelevation.com/dccmanual)

4

## Troubleshooting

### The DCC module does not power-up:

- Check that the cable (1) from your DCC module is fitted to the COMs port of your Nelevator and NOT its DCC port.
- Ensure the cable's jack plug is inserted fully into the Nelevator's COMs port.
- Check that your Nelevator is plugged in and powered-up with the green LED illuminated on its control box.
- Ensure that your Nelevator's COMs port is configured to 12V (some earlier models were initially configured for 5V).

5

## Need More Help?

If you're still experiencing difficulties with your DCC module, please visit the support pages of our website where we have a section of frequently asked questions (FAQs) and other support documentation that may be helpful:

- **Website Support Area:** [nelevation.com/support](http://nelevation.com/support)
- **Website FAQs:** [nelevation.com/faqs](http://nelevation.com/faqs)

